

# NOW SELLING: 419 & 420

5.5 TO 13.7 ACRES // ACHESON INDUSTRIAL



**ACHESON INDUSTRIAL PARK  
(ZONE 2)**

419 420

LOT	ZONING	AREA (ac)	PRICE
419	IM	5.47	\$ 2,516,200 (\$460,000/acre)
420	IM	8.26	\$ 3,799,600 (\$460,000/acre)

Acheson continues to be a highly sought after location for businesses due to its strategic location amidst multiple major transportation routes, low property tax, and active business association.

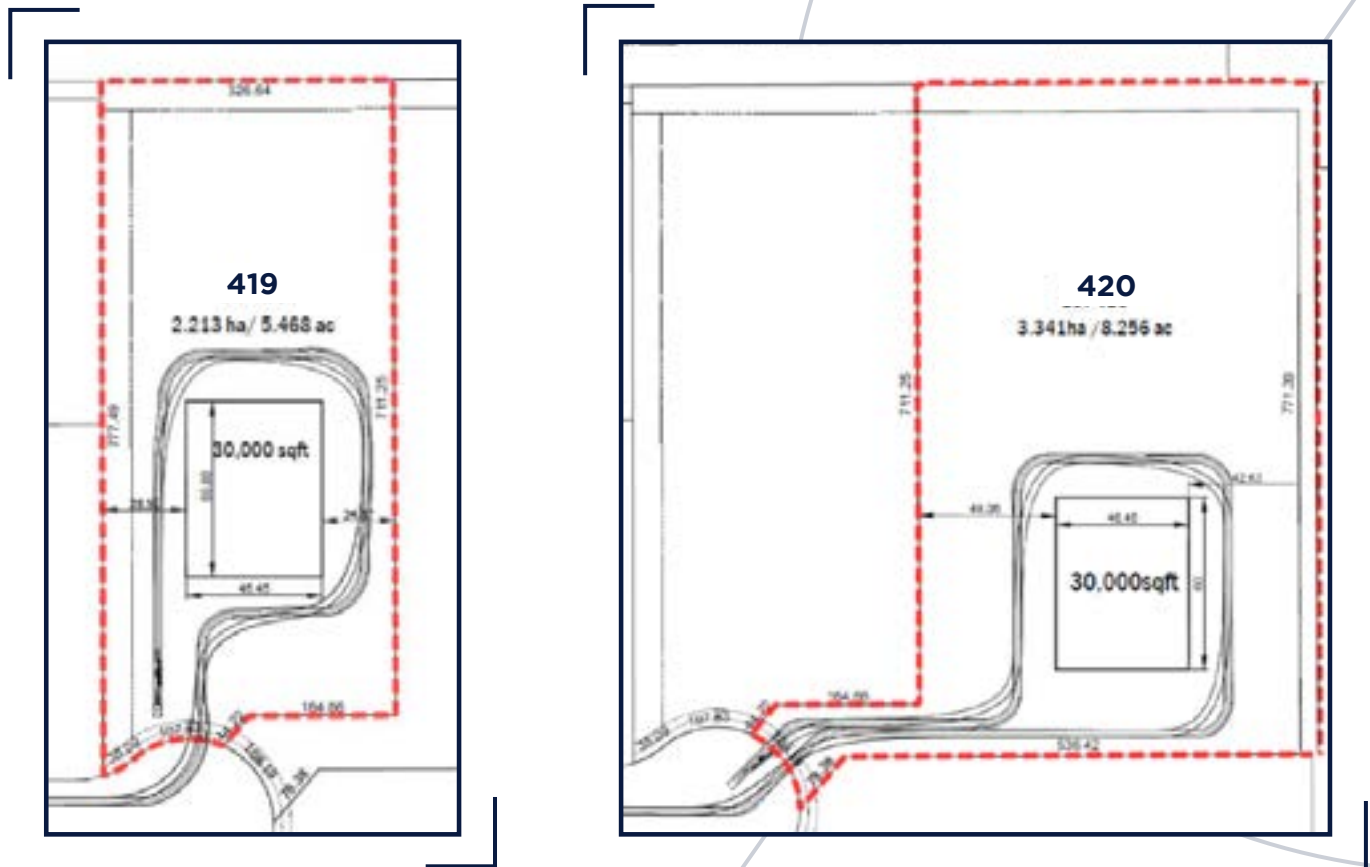
- PROPERTY HIGHLIGHTS**
- Build to suit options available
  - Within close proximity to CN Intermodal Yard
  - Fully serviced and ready for immediate possession

**NOW SELLING: LOT 419 & 420**

ACHESON INDUSTRIAL



**SITE PLAN RENDERINGS WITH TURNING RADIUS  
(CONCEPT ONLY)**



**LOTS CAN BE COMBINED FOR A 13.3 ACRE SITE**

We operate in the Edmonton Metro Region and can provide your business with a streamlined process to purchase land, construct your building, or lease office, industrial, or retail space.



Our team brings over 50 years of combined experience in real estate development and management.

We will manage municipal approvals and help you navigate site requirements and construction processes so you can focus on what you do best.

Join companies like Sysco, Western Star, and Engie-Fabricom in one of our industrial parks.



**Acheson**

**500**  
ACRES



**Fort Saskatchewan**

**1,000**  
ACRES



**Sherwood Park**

**100**  
ACRES

We provide customized design build options for lease or purchase