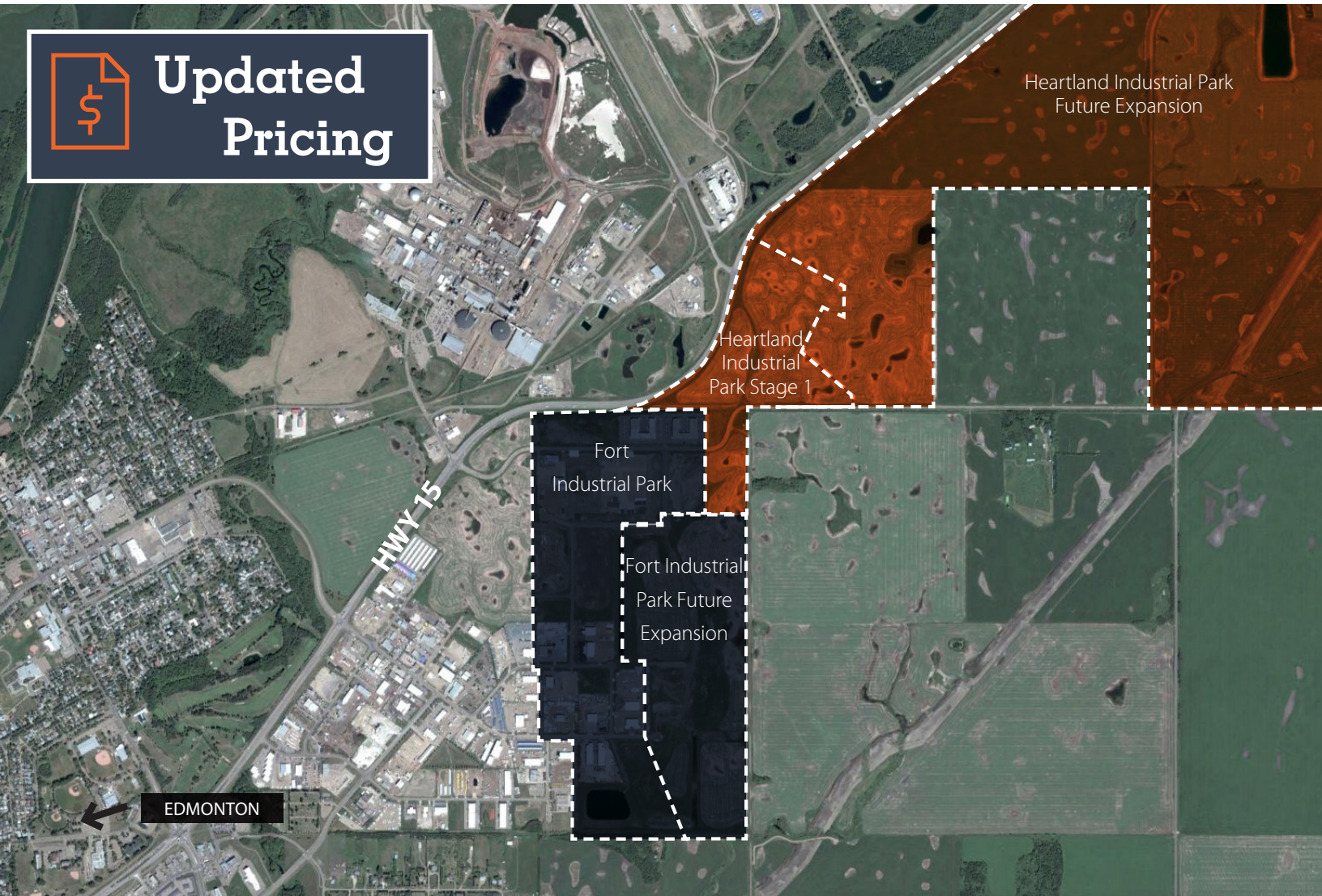




**Updated  
Pricing**



## 2.10 to 15.90 Acres Available

- Readily developable small to large format subdivided lots
- Additional 900 acres of industrial development land opportunities available
- Build to suit opportunities (see page 3 for details)
- All off-site levies paid
- Attractive pricing

### Get more information

**Thomas Ashcroft**, Principal  
780.429.7571  
thomas.ashcroft@avisonyoung.com

**Grant Ranslam**, Principal  
780.702.5853  
grant.ranslam@avisonyoung.com

**Ryan Zabloski**, Principal  
780.702.0691  
ryan.zabloski@avisonyoung.com

[avisonyoung.com](http://avisonyoung.com)

Land For Sale

Heartland Industrial Park, Fort Saskatchewan



## Land For Sale

## Heartland Industrial Park, Fort Saskatchewan

### FORT INDUSTRIAL PARK

LOT	AREA (AC)	PRICE (AC)	POSSESSION
Plan 1424324			
Blk 1 Lot 8	2.19	<b>SOLD</b> Build to suit by TAG	
Plan 1522620			
Blk 4 Lot 4	2.09	\$299,000	Immediate
Blk 5 Lot 1	4.47	\$409,000	Immediate
Blk 5 Lot 2	3.98	\$389,000	Immediate
Blk 5 Lot 3	4.55	\$389,000	Immediate
Blk 7 Lot 6	2.14	\$399,000	Immediate
Blk 7 Lot 7	2.14	\$389,000	Immediate
Blk 7 Lot 8	1.60	\$389,000	Immediate
Blk 7 Lot 9	2.60	<b>LEASED</b> Build to suit by TAG	
Plan 1421693			
Blk 6 Lot 1	2.68	\$409,000	Immediate
Plan 1025416			
Blk 9 Lot 4	10.58	\$375,000	Immediate

### HEARTLAND INDUSTRIAL PARK STAGE 1

LOT	AREA (AC)	PRICE (AC)	POSSESSION
Plan TBD			
Blk 8 Lot 2	8.43	\$409,000	Winter 2022
Blk 8 Lot 1	4.74	\$409,000	Winter 2022
Blk 2 Lot 3	7.31	\$449,000	Winter 2022
Blk 2 Lot 2	2.92	\$449,000	Winter 2022
Blk 2 Lot 1	12.00	<b>PENDING</b>	Winter 2022
Blk 1 Lot 1	10.00	\$519,000	Winter 2022
Blk 4 Lot 1	3.01	\$399,000	Winter 2022
Blk 4 Lot 2	1.95	\$409,000	Winter 2022
Blk 3 Lot 1	2.52	\$409,000	Winter 2022
Blk 3 Lot 2	1.85	\$399,000	Winter 2022
Blk 3 Lot 3	2.15	\$399,000	Winter 2022
Blk 3 Lot 4	2.00	\$399,000	Winter 2022

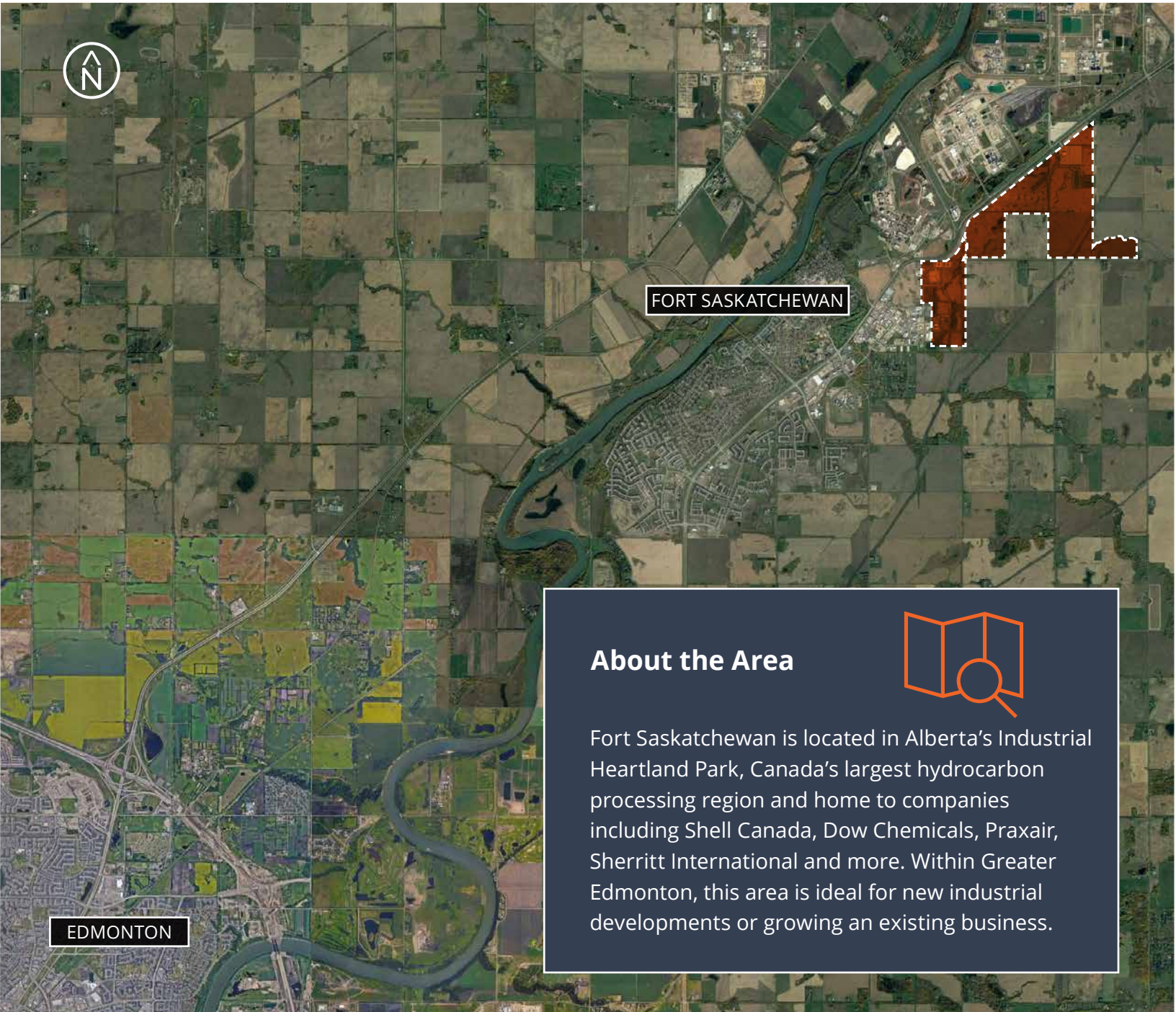
### Features

- Fully serviced (including curb and gutter)
- Ready for building construction
- Highway 15 frontage
- Located on the High Load Corridor
- Light Industrial & Medium Industrial zoning available

**See this property on [tag.ca](http://tag.ca)**



**Click to view build to suit details**



## About the Area



Fort Saskatchewan is located in Alberta's Industrial Heartland Park, Canada's largest hydrocarbon processing region and home to companies including Shell Canada, Dow Chemicals, Praxair, Sherritt International and more. Within Greater Edmonton, this area is ideal for new industrial developments or growing an existing business.

## Get more information

### Thomas Ashcroft

Principal

780.429.7571

[thomas.ashcroft@avisonyoung.com](mailto:thomas.ashcroft@avisonyoung.com)

### Grant Ranslam

Principal

780.702.5853

[grant.ranslam@avisonyoung.com](mailto:grant.ranslam@avisonyoung.com)

### Ryan Zabloski

Principal

780.702.0691

[ryan.zabloski@avisonyoung.com](mailto:ryan.zabloski@avisonyoung.com)

