



Partnership. Performance.



## Property Highlights

- Rare opportunity for a low site coverage (11%) best-in-class building on a premium corner lot
- Substantial completion of the building and site work can be achieved 5 months following breaking ground
- Ability to accommodate 11,210 to 22,420 sf on main floor; additionally, building is engineered to add second floor office mezzanine of up to an additional 3,285 sf
- New precast construction with build-to-suit office
- Four drive-thru loading bays and four drive-in loading bays
- Drive around access with fenced and secured yard
- Close proximity to Highway 15

### Avison Young Industrial Team

780.428.7850

edmonton.industrial@avisonyoung.com

8626 - 115 STREET  
FORT SASKATCHEWAN, AB



Platinum member



## Property Details

### LEGAL ADDRESS:

Plan 1522620, Block 5, Lot 1

### BUILDING AREA:

22,420 square feet

**Minimum Size:** 11,210 square feet

**Office Area:** Landlord will build to suit. Additional 3,285 sf of second floor office mezzanine can be built

### SITE SIZE:

4.47 acres

### POWER:

400 amp, 347/600 volt

### LIGHTING:

Motion censored LED

### CLEAR CEILING HEIGHT:

25'5"

### LOADING:

Grade (16' x 18') - Rear (8), Front (4) drive-thru/drive-in

### LEASE RATE:

Starting at \$19.00 psf net

### OPERATING COSTS:

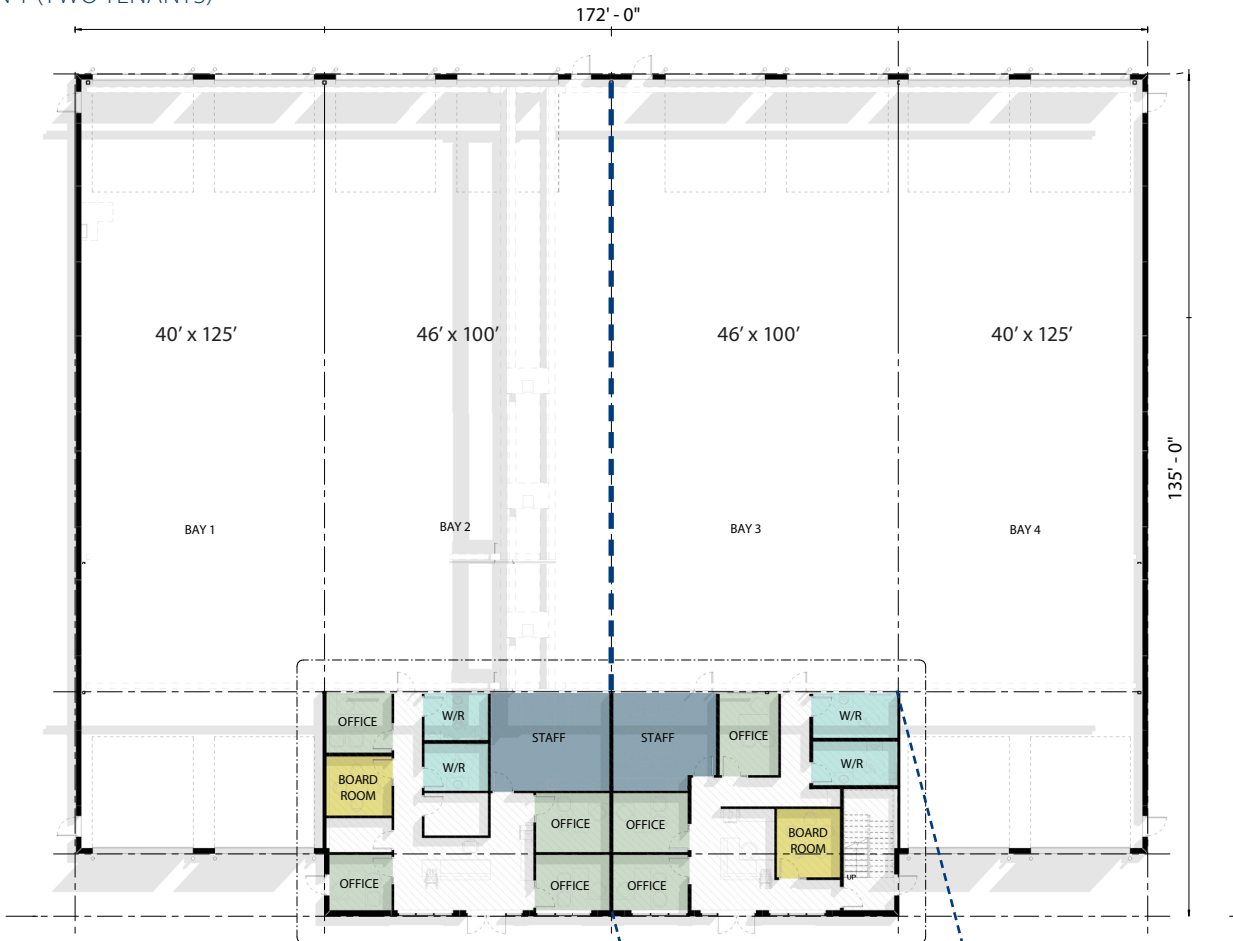
TBD

## Additional Details

- Wide drive isles with drive around access/ egress
- Fully fenced site with 6' chain link fence and three 14' non-motorized swing gates
- Option for trench sumps throughout
- Fully landscaped
- Radiant tube heating in shop
- Ample parking for office



OPTION 1 (TWO TENANTS)



Tenant 1 with 1 storey office

Tenant 2 with 2 storey office

**FLEXIBLE BUILD OUT OPTIONS**  
Landlord will build to suit



2 Storey Addition

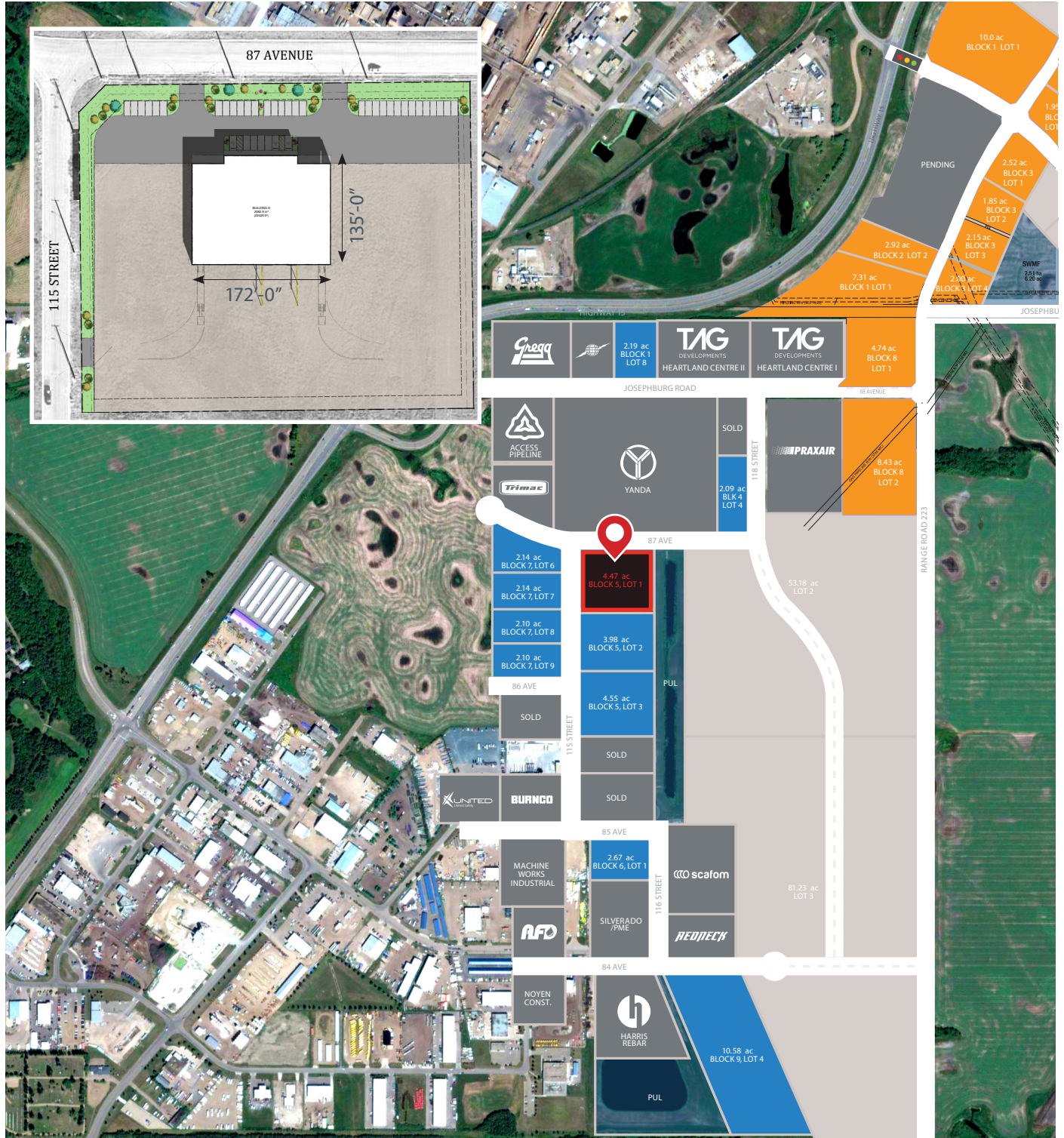
OPTION 2 (ONE TENANT)



Main floor



2nd Floor



avisonyoung.com