



SHERWOOD PARK COMMERCIAL - LOT 15
FOR SALE // BUILD TO SUIT

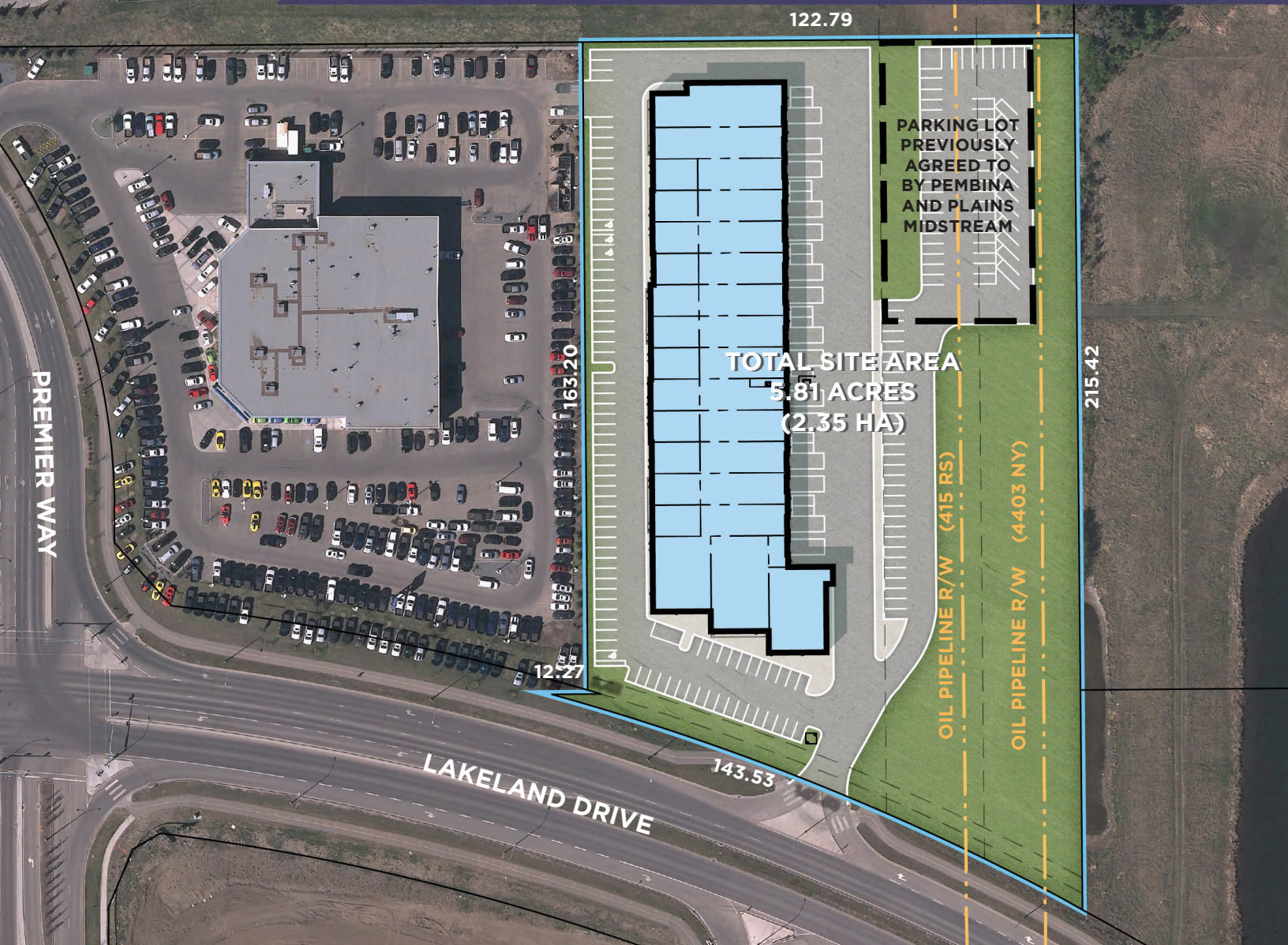
Lot 15 is ideally located with excellent exposure on Lakeland Drive along with proximity to Millennium Place, which sees over 2.3 million visitors per year

PROPERTY HIGHLIGHTS

- Fully serviced to the property line
- Proximity to Millennium Place Recreation Centre
- Build to suit options available

NOW SELLING: LOT 15

SHERWOOD PARK COMMERCIAL



- // Site Area 5.81 acres*
- // Zoning C5 - Service Commercial
- // Legal Plan 1024941, Block 242, Lot 15
- // Services Power, gas, water, sewer, and phone
- // Sale Price \$3,300,000
- // Available Immediately

*This lot is partially encumbered by pipeline right of ways.

The above concept shows the potential development of 4.23 acres of land.