

## NOW SELLING: LOT 15

SHERWOOD PARK COMMERCIAL



### SHERWOOD PARK COMMERCIAL - LOT 15 FOR SALE // BUILD TO SUIT

Lot 15 is ideally located with excellent exposure on Lakeland Drive along with proximity to Millennium Place, which sees over 2.3 million visitors per year

#### PROPERTY HIGHLIGHTS

- Fully serviced to the property line
- Proximity to Millennium Place Recreation Centre
- Build to suit options available

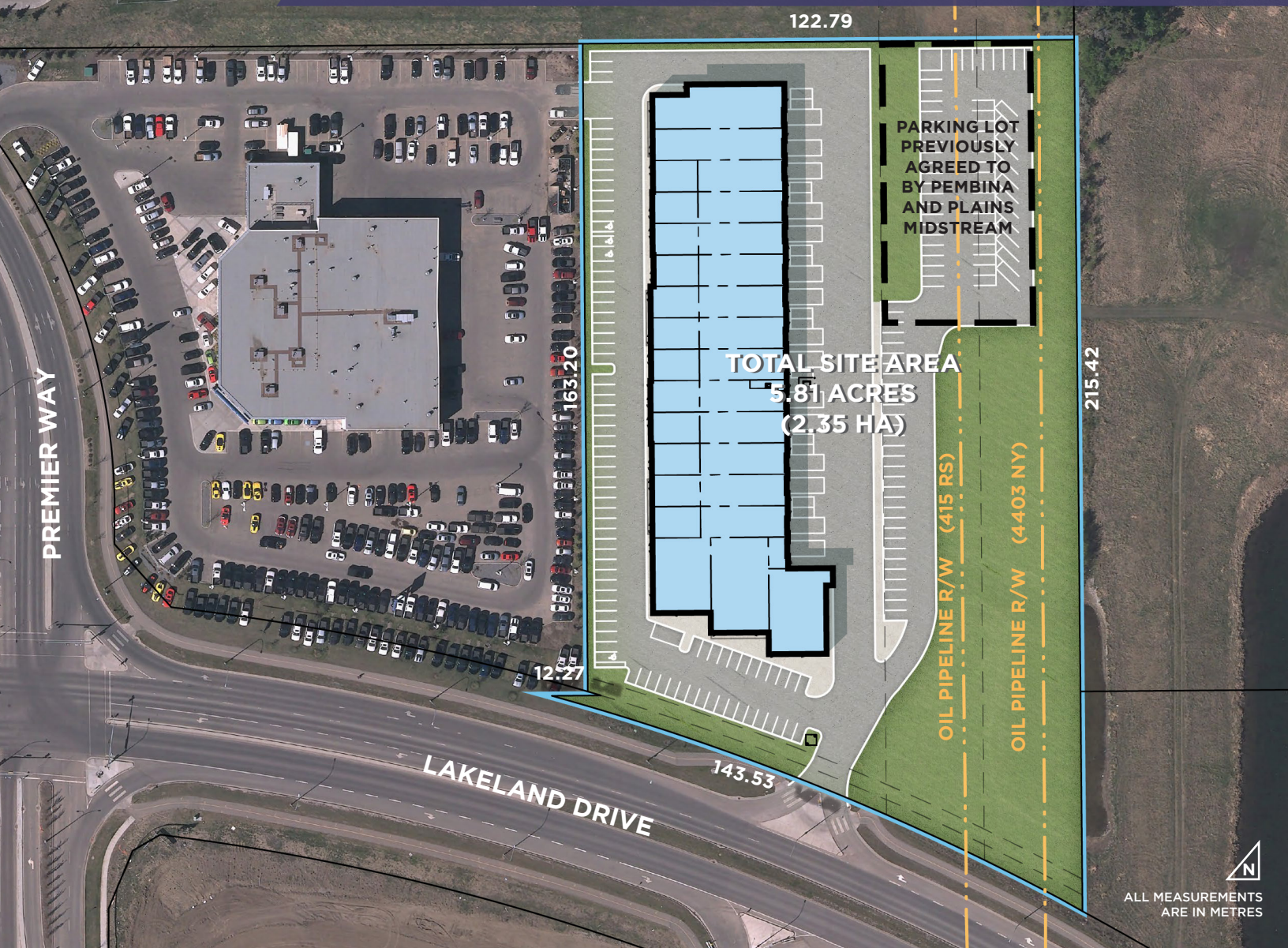
See this property on [tag.ca](https://tag.ca)

**CONTACT** // Kaylee Haynes at 780.486.9658 or [khaynes@tag.ca](mailto:khaynes@tag.ca)

// [tag.ca](https://tag.ca)



**NOW SELLING: LOT 15**  
SHERWOOD PARK COMMERCIAL



- // Site Area 5.81 acres\*
- // Zoning C5 - Service Commercial
- // Legal Plan 1024941, Block 242, Lot 15
- // Services Power, gas, water, sewer, and phone
- // Sale Price \$2,900,000
- // Available Immediately

\*This lot is partially encumbered by pipeline right of ways.

The above concept shows the potential development of 4.23 acres of land.

See this property on [tag.ca](https://tag.ca)

**CONTACT** // Kaylee Haynes at 780.486.9658 or [khaynes@tag.ca](mailto:khaynes@tag.ca)

// [tag.ca](https://tag.ca)